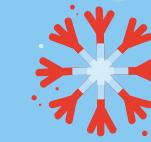
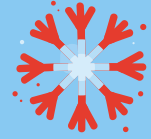




# HOLIDAY WISH LIST

BE A PART OF SOMEBODY'S STORY  
THIS HOLIDAY SEASON





Each year, Enviros sees an increase in the number of individuals and families requiring assistance during the holiday season. Enviros relies on the support of individuals, families and businesses to ensure that we can meet the needs of our community. Thank you for supporting Enviros and the work that we do.

### OUR MISSION

PARTNERING WITH YOUNG PEOPLE AND FAMILIES TO TAKE CHARGE OF THEIR LIVES AND ACTIVELY CHOOSE THE DIRECTION IT TAKES.

### OUR VISION

REIMAGINED LIVES, FULFILLING POTENTIAL AND THRIVING IN COMMUNITY



# HOLIDAY WISH LIST

Items	Details
Turkey and/or Ham	12 needed for 6 programs
Everyday Essentials	Towels, bedding (twin), baking supplies, hygiene items
Gifts for Children & Youth ages 6-26	Please contact <a href="mailto:rbessette@enviros.org">rbessette@enviros.org</a> for specific details
Clothing	Pajamas, socks, underwear, sweatpants (grey or black)
Grocery Gift Cards	To give to individuals and families who are accessing community programs
Winter Gear (all ages and genders)	Gently used jackets, boots, hats, gloves & scarves



# WAYS TO SUPPORT US

How Can I Help?	Details
Adopt a Family, Individual or Program	Change the season for those in need by providing gifts or a holiday meal.
Business or Private Fundraiser	Get your colleagues, family or friends involved - no donation is too big or small.
Cash Donation	Donate to your program of choice or to the area of greatest need.
Toy Drive	Donate new toys to be used as gifts for group care and community programs
<p><a href="https://www.enviros.org/holidaygiving/">https://www.enviros.org/holidaygiving/</a> <a href="mailto:rbessette@enviros.org">rbessette@enviros.org</a></p>	



Enviros serves children, individuals, youth and families through 13 programs in the areas of addiction recovery, homelessness prevention, group care, foster care, justice, respite care for neurodiverse children and supports for youth who are transitioning to independence.

Program	Age Range of Individuals Accessing Program	Program	Age Range of Individuals Accessing Program
Connects - Group Care	6-12	Respite Care Connection - Community	6-17
Excel - Justice/Young Offenders	13-17	Shunda Creek - Addiction Recovery	18-26
Foster Care	0-17	Stride - Therapeutic Foster Caregiving	12-17
Journeys - Group Care	12-15	Triveri House - Homelessness Prevention	18+
Neurodevelopmental Diagnostic & Assessment Centre - Community	6+	Youth Transition to Adulthood - Community	15-24
Passages - Group Care	13-17	<a href="https://enviros.org/holidaygiving">enviros.org/holidaygiving</a>	





# THANK YOU FOR SUPPORTING ENVIROS

**WISHING YOU AND YOURS A  
JOYFUL HOLIDAY SEASON**

